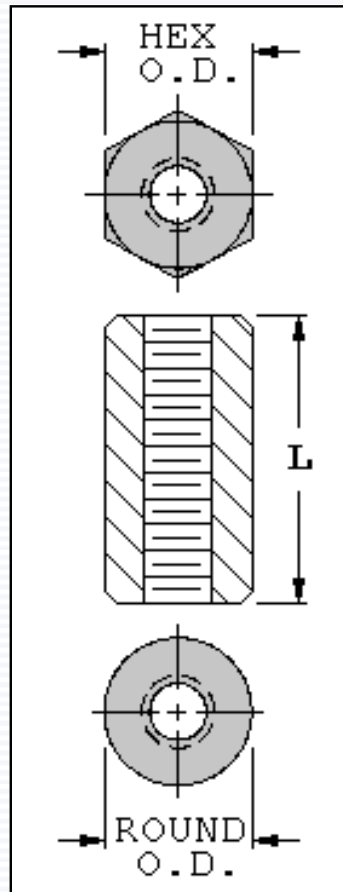


# Insulated Threaded Standoffs

4-40 Thread - .250 [6,35] O.D. - Nylon • Phenolic



4-40 Threaded Standoffs - .250 [6,35] O.D.

Length "L"	Outside Diameter O.D.	Hex Nylon 6/6, UL94V-2	Hex Nylon 6/6, UL94V-0	Round Phenolic PBE, Neutral
		Cat. No.	Cat. No.	Cat. No.
.250 [6,35]	.250 [6,35]	<b>1902A</b>	<b>8440A</b>	<b>376</b>
.375 [9,53]	.250 [6,35]	<b>1902B</b>	<b>8440B</b>	<b>377</b>
.500 [12,70]	.250 [6,35]	<b>1902C</b>	<b>8440C</b>	<b>378</b>
.625 [15,87]	.250 [6,35]	<b>1902F</b>	<b>8440D</b>	—
.750 [19,05]	.250 [6,35]	<b>1902D</b>	<b>8440E</b>	<b>379</b>
.875 [22,23]	.250 [6,35]	<b>1902G</b>	<b>8440F</b>	—
1.000 [25,40]	.250 [6,35]	<b>1902E</b>	<b>8440G</b>	<b>380</b>
1.500 [38,10]	.250 [6,35]	—	—	<b>381</b>
2.000 [50,80]	.250 [6,35]	—	—	<b>382</b>

Phenolic Standoffs, 1.500 [38,10] and 2.000 [50,80] are tapped .375 [9,52] each end.

Standoff sizes not shown are available on special order.

[Click to Request Samples](#)

[VIEW PRODUCT OVERVIEW](#)